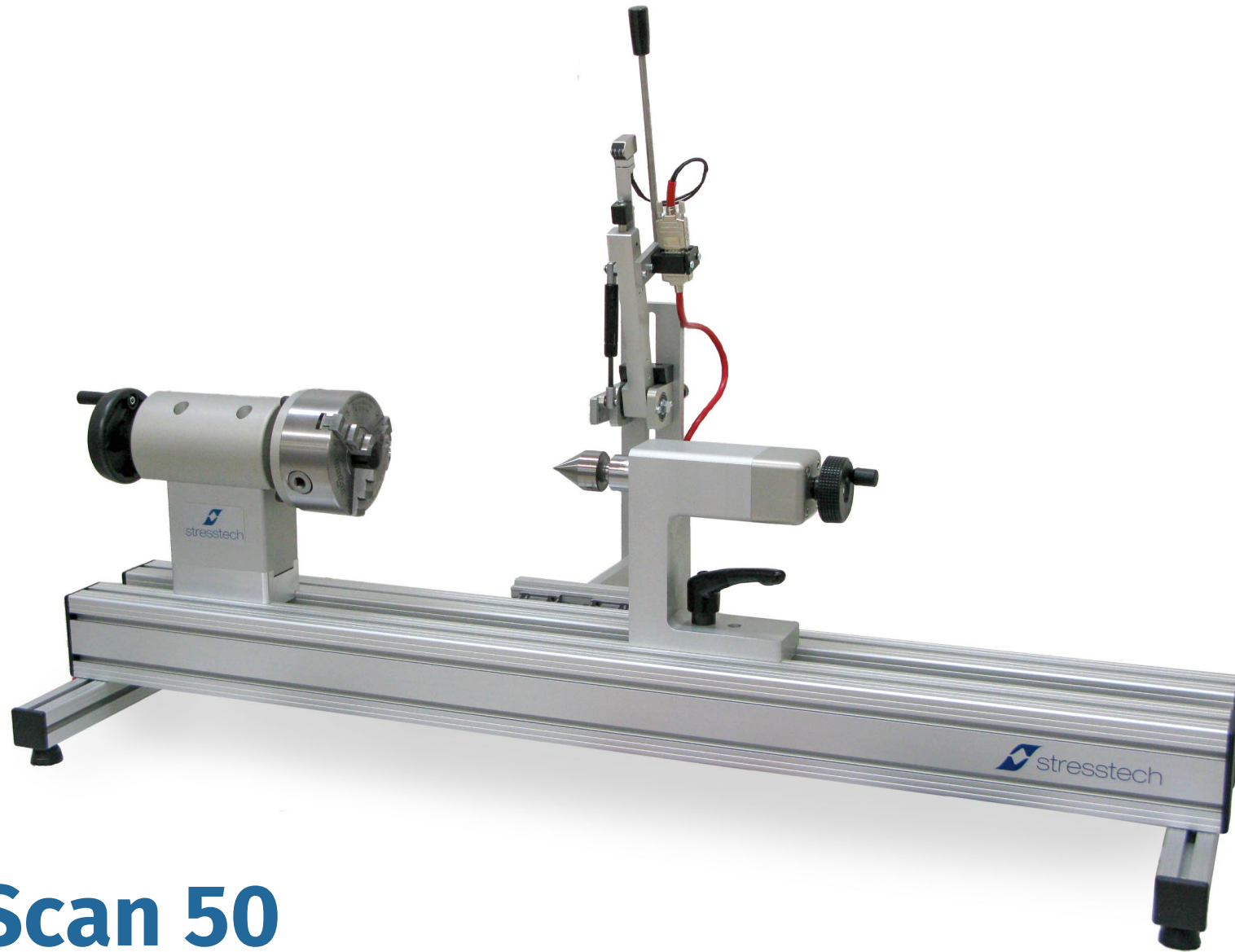


# CamScan 50

2019-06-11



*Measure for success*



# CamScan 50

# CamScan 50

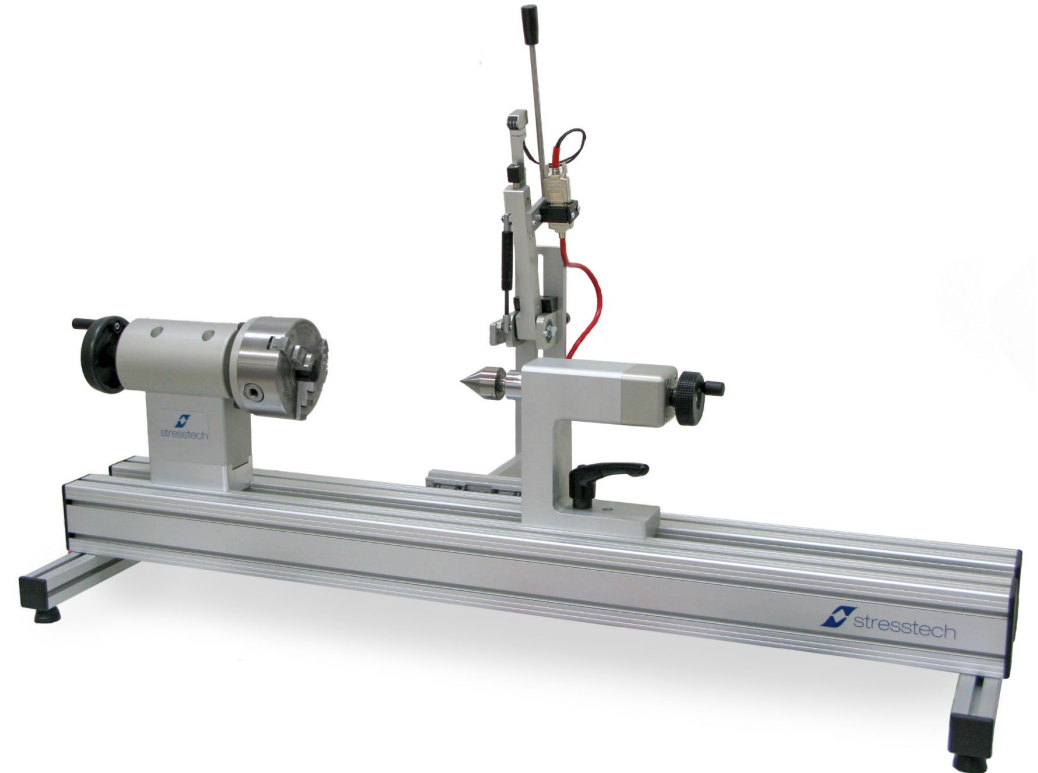
---

The surface of a freshly ground component may appear to be fine, but **unseen damages** on or below the surface, when gone undetected, can lead to serious problems for the end user.

**Undetected grinding burn or heat treatment defect may cause:**

- ✓ Internal quality failure on production line  
(extra costs: rework, scrap)
- ✓ External quality failure  
(warranty cases, brand value loss)

**CamScan 50** is a manual grinding burn and heat treatment defect detection system for low-volume applications.

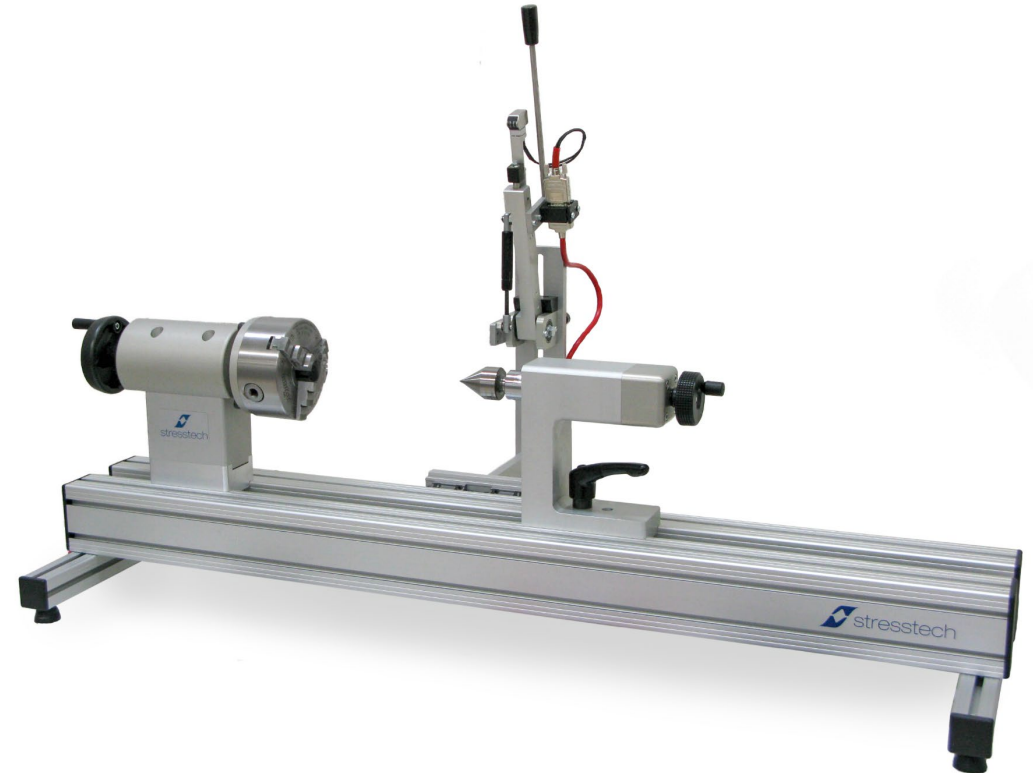


# CamScan 50

---

**CamScan 50** is designed for quality control needs of small to medium sized circular symmetrical parts like passenger car shafts.

- ✓ Customizable ground level system for Barkhausen noise inspection method
- ✓ One stand can be equipped with several different sensor arms and sensors for detecting a great variation of surfaces and parts
- ✓ Can be placed next to production line for sample test and optimizing machining parameters or in testing laboratory for material study



# CamScan 50

Standard system	Item 100038
Frame	123346010
Manual rotation	123346050
Chuck RÖHM ZG 300, 3 jaws	123346033
Tailstock	123346020
Drive center, precision ground	123346385
Sensor carrier, OD type	100148
Fixing piece	123346013
Energy chain assembly	123346016
BN tool set	288490008
Documentation in English	000002
Factory acceptance test	5044

Mandatory accessories (analyzer+sensor+software)	Item
Rollscan analyzer: ✓ Rollscan 250 ✓ Rollscan 350	100036 100034
Sensor depending on the sample and surface to be measured	
ViewScan software package (English)	100050

# CamScan 50

Options for sensor carrier	Item
ID sensor arm	123550040
Custom sensor carrier/arm/fixture	100152
Sensor carrier limiter	123346018
Sensor carrier limiter spring stopper	123346019

Options for frame	Item
✓ Short frame: length less than 1150 mm/45.28 in	123346011
✓ Long frame: length 1151 mm–2000 mm/45.31 in–78.74 in	123346012

Options for drive head	Item
Drive center with plastic pin	123346380
Drive center, smooth	123346383
Drive center, smooth and cut	123346384
Drive center 7610120	36307610120B
Chuck RÖHM KRF 125	123346034

Options for comb plate	Item
CamScan comb plate	100149
CamScan 100 comb plate holder	123346014
Finger protection casing	123346015

Other options	Item
Bed for assembled camshaft modules (X-Y table for cylinder head module)	
Camshaft/shaft bed	
V-blocks	
2D code reader ViewScan option: 2D code reader module	100181 6010005407
ViewScan: Other language module	6010005402
Documentation in local language	990009

For optional accessories, see "Barkhausen noise accessories" presentation.

# CamScan 50

## Standard system features

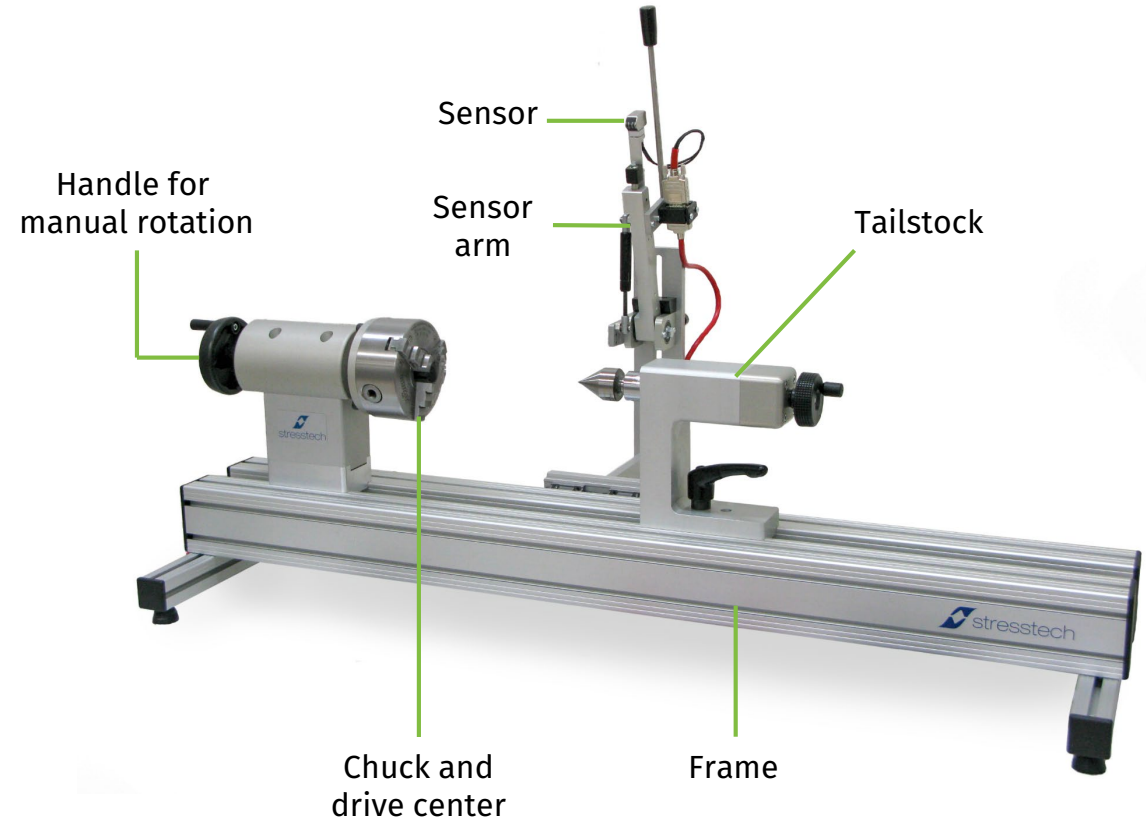
Chuck with two different types of jaws and one drive center

Handle for manual rotation

Tailstock with fine adjustment wheel

One sensor arm as standard, additional sensor arms as option

Standard frame 1150 mm, other sizes as option



# CamScan 50

## Options for sensor carrier

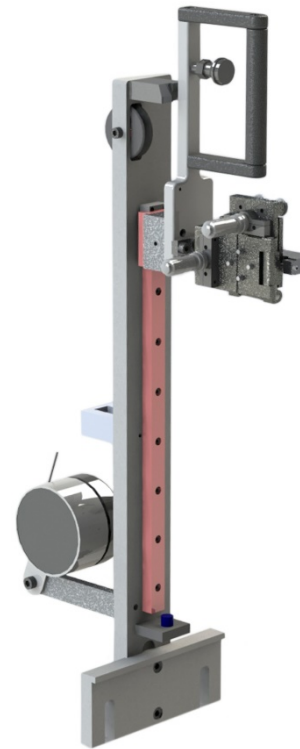
ID sensor arm for measuring ID surfaces

Custom sensor carrier/arm/fixture

Sensor carrier limiter

Sensor carrier limiter spring stopper

ID sensor arm  
123550040



Sensor carrier limiter  
123346018



Sensor carrier limiter  
spring stopper  
123346019





# CamScan 50

## Options for frame

- ✓ Short frame: length less than 1150 mm/45.28 in
- ✓ Long frame: length 1151 mm–2000 mm/45.31 in–78.74 in

## Options for drive head

Drive center with plastic pin

Drive center, smooth

Drive center, smooth and cut

Drive center 7610120

Chuck RÖHM KRF 125

Drive center with plastic pin

123346380



Drive center, smooth

123346383



Drive center, smooth and cut

123346384



Drive center 7610120

36307610120B



Chuck RÖHM KRF 125

123346034



# CamScan 50

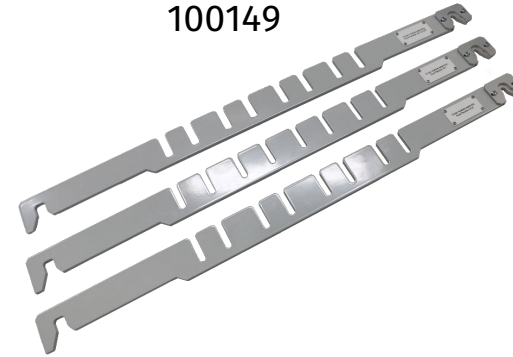
## Options for comb plate

CamScan comb plate for aligning the sensor

CamScan 100 comb plate holder

Finger protection casing between the comb plate holder and chuck

Comb plate for CamScan  
100149



Comb plate holder  
123346014



Casing  
123346015



# CamScan 50

## Other Options

Bed for assembled camshaft modules (X-Y table for cylinder head module)

Adjustable camshaft/shaft bed for attaching V-blocks to the frame

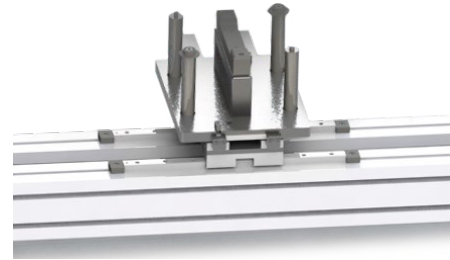
V-blocks for the axle support

2D code reader  
ViewScan option: 2D code reader module

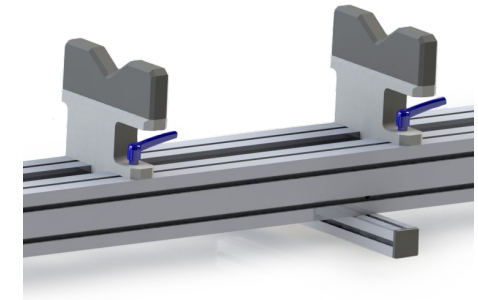
ViewScan: Other language module

Documentation in local language

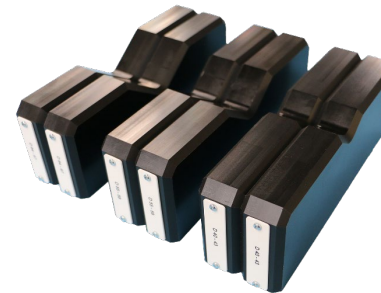
Bed for assembled  
camshaft modules



Camshaft/shaft bed



V-blocks



2D code reader  
1001810



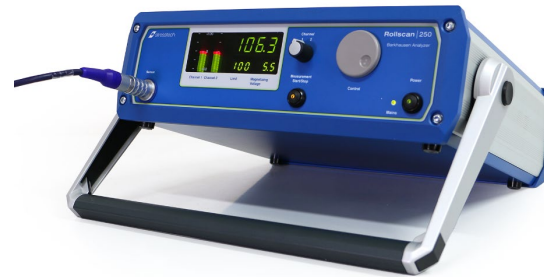
# CamScan 50

## Mandatory accessories: Analyzers

Barkhausen noise system requires analyzer:

- ✓ **Rollscan 250**  
for manual and automated two-channel systems
- ✓ **Rollscan 350**  
with graphical display for manual and automated systems

Rollscan 250  
100034



Rollscan 350  
100036



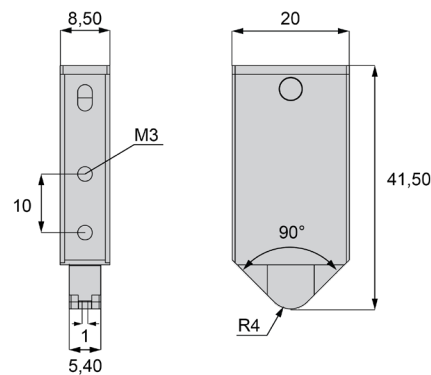
# CamScan 50

## Mandatory accessories: Sensors

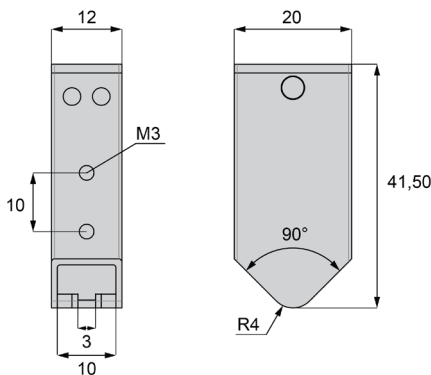
Area to be measured defines size and shape of the Barkhausen noise sensor. One system can be equipped with several different kind of sensors. Typical sensors for camshaft are presented on this page.

Cam lobe width	Sensor size
6 mm →	1 mm
10 mm →	3 mm
12 mm →	5 mm
14 mm →	8 mm

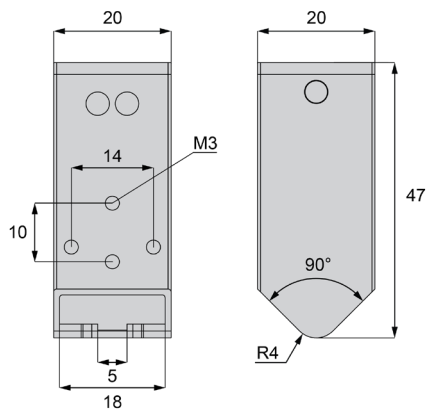
Cam sensor 1 mm  
S1-11-22-010A



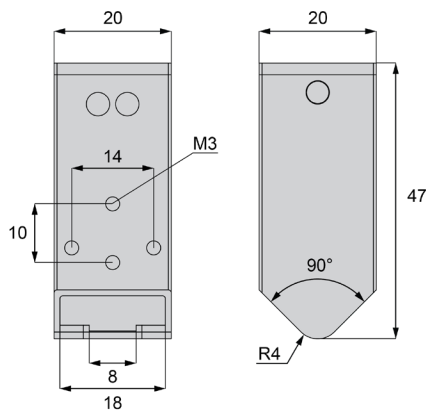
Cam sensor 3 mm  
S1-11-22-030A



Cam sensor 5 mm  
S1-11-22-050A



Cam sensor 8 mm  
S1-11-22-080A

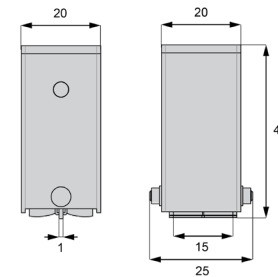


# CamScan 50

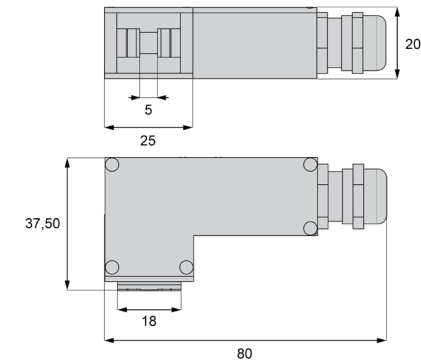
## Mandatory accessories: Sensors

Area to be measured defines size and shape of the Barkhausen noise sensor. One system can be equipped with several different kind of sensors. Typical sensors for outer and inner diameter measurements are presented on this page.

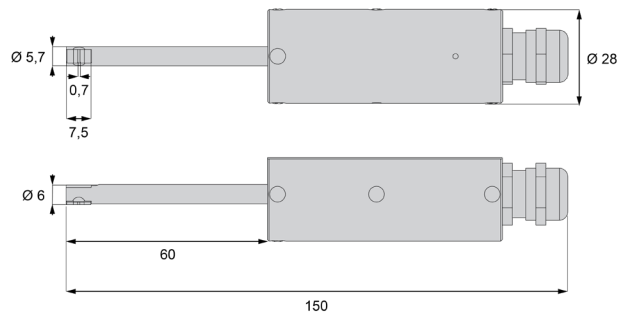
OD sensor 1 mm  
S1-15-32-02



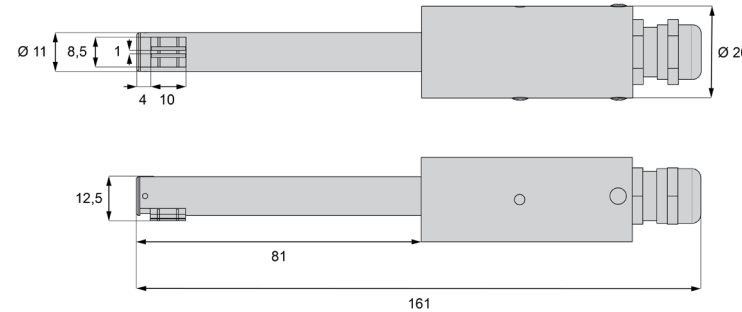
ID sensor, axial  
S1-19-22-02



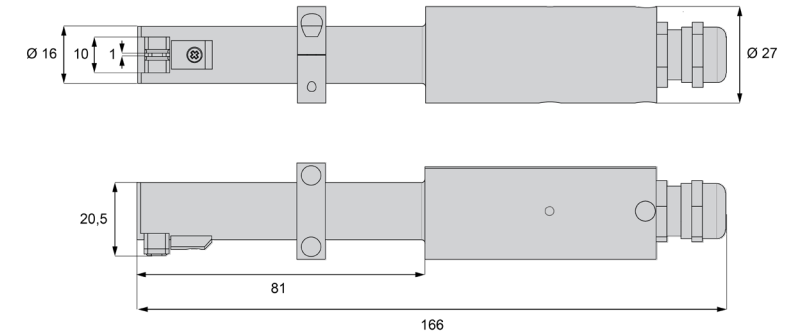
ID sensor, axial  
S1-19-22-01



ID sensor, circumferential  
S1-19-32-01



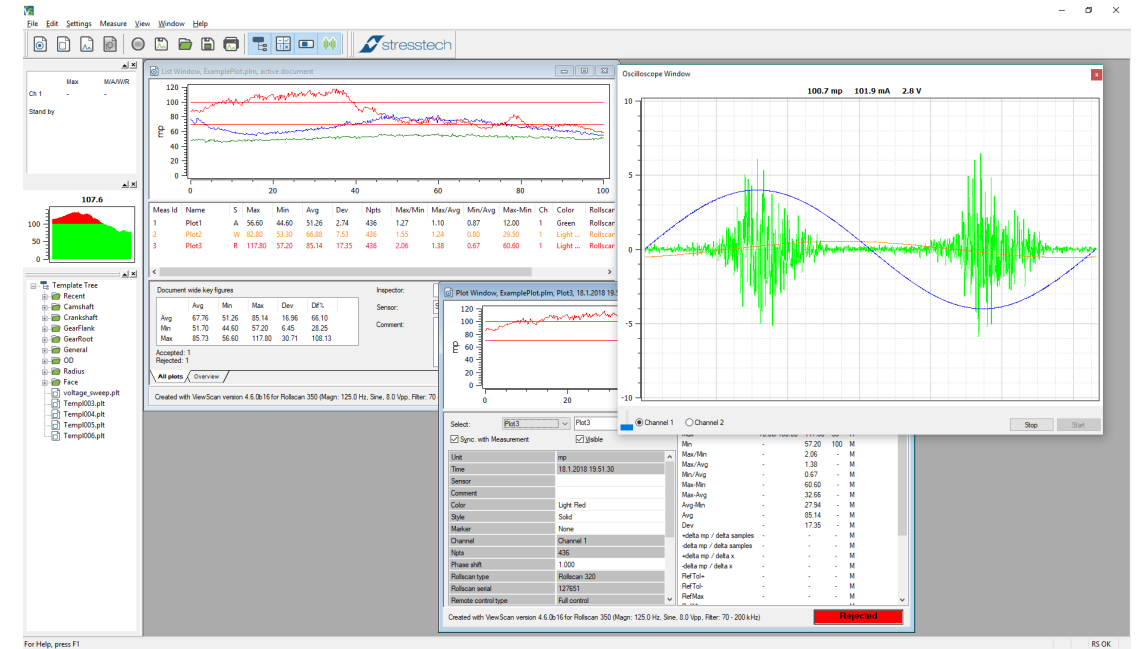
ID sensor, circumferential  
S1-19-32-02



# CamScan 50

## Mandatory accessories: ViewScan data analyzing software

- ✓ Collect and analyze data from Rollscan
- ✓ Document your measurement by saving and printing the results
- ✓ Export data for analysis with other programs
- ✓ Set rejection limits for real-time rejection checking
- ✓ Collect data from multiple Rollscan analyzers simultaneously
- ✓ View the results as a 3-dimensional polysurface

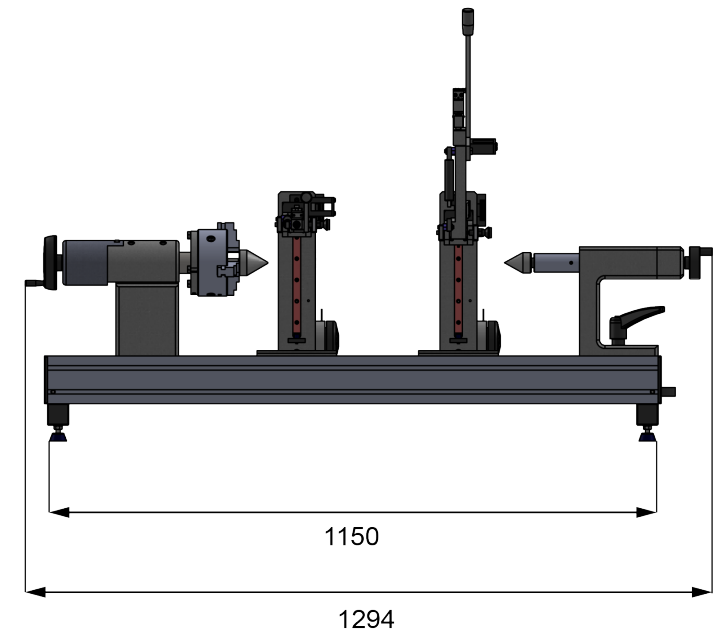
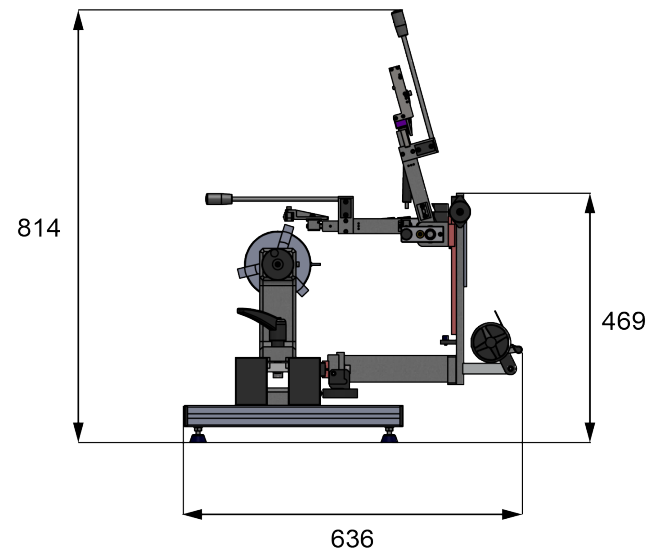


ViewScan  
100050

# CamScan 50

## Dimensions

Depth	636 mm	25.04 in
Width	1294 mm	50.94 in
Height	469–814 mm	18.46–32.05 in
Weight	35 kg	77 lbs

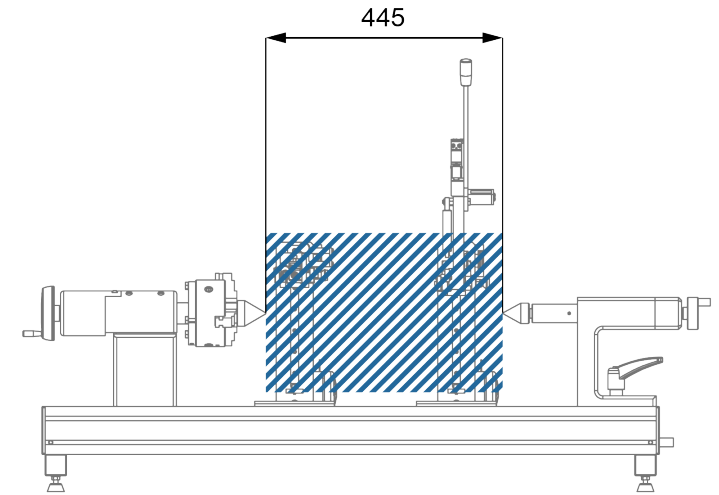
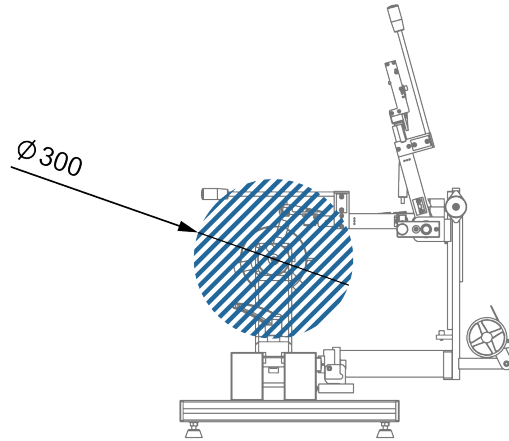




# CamScan 50

## Part dimensions (standard system)

Max. part diameter	300 mm	11.81 in
Max. part length	445 mm	17.52 in
Max. part weight	10 kg	22 lbs

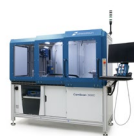


# CamScan 50

---

## Operations

1. Select correct template from ViewScan software or create new measurement template (needs to be done once for each part).
2. Make sure the part to be measured is clean.
3. Place the part between the centers.
4. Move sensor to the part you want to measure.
5. Manually rotate the part by using the handle and hold the sensor against the surface to be measured.
6. See the results on Rollscan front panel and ViewScan screen.
7. Save and print the results as required in company policy.



Feature	CamScan 500C	CamScan 300	CamScan 200	CamScan 100	CamScan 50
Max. part diameter	210 mm/8.27 in	85 mm/3.35 in	85 mm/3.35 in*	300 mm/11.81 in	300 mm/11.81 in
Max. part length	850 mm/33.46 in	798 mm/31.42 in	1320 mm/51.97 in	445 mm/17.52 in	445 mm/17.52 in
Max. part weight	15 kg/33 lbs	10 kg/22 lbs	50 kg/110 lbs	10 kg/22 lbs	10 kg/22 lbs
Automation level	Automated (turn-key system)	Semi-automated (turn-key system)	Semi-automated (ground-level system)	Semi-automated (ground-level system)	Manual (ground-level system)
Standard amount of sensor arms or sensor carriers	1+1	1	1	1	1
Max. amount of sensor arms/carriers	1+1	1	2	3	3
Sensors in use simultaneously	1	1	1	1	1
Trigger mode: Rotation/External/Camshaft lobe	NA	✓/✓ (Opt.)/✓	✓/✓ (Opt.)/✓ (Opt.)	✓/✓ (Opt.)/✓ (Opt.)	-/✓ (Opt.)/✓ (Opt.)
Auto start/stop	NA	✓/✓	-/✓	-/✓ (Opt.)	-/-
Software controlled	✓	NA	NA	NA	NA
Compatible with Rollscan 350/320/250	✓/✓/✓	✓/-/✓	✓/-/✓	✓/-/✓	✓/-/✓
Comb plate	NA	3 pcs	Opt.	Opt.	Opt.
Tailstock with precision linear guide	✓	✓	✓	-	-
Safety enclosure with integrated PC cabinet and keyboard & monitor mount	✓	-	-	-	-
Voltage	115 or 230 V AC, 50-60 Hz**	115 or 230 V AC, 50-60 Hz**	115 or 230 V AC, 50-60 Hz**	100-240 V AC, 50-60 Hz	-
Power	1.4 kVA	350 VA	460 VA	130 VA	-
System weight	500 kg/1102 lbs	115 kg/254 lbs	200 kg/441 lbs	50 kg/110 lbs	35 kg/77 lbs
System H x W x D	2219 x 2033 x 871 mm 87.36 x 80.04 x 34.29 in	412 x 1792 x 809 mm 16.22 x 70.55 x 31.85 in	739 x 2721 x 750 mm 29.09 x 107.13 x 29.53 in	469 x 1294 x 689 mm 18.46 x 50.94 x 27.13 in	469 x 1294 x 636 mm 18.46 x 50.94 x 25.04 in

\*If the part diameter is more than 85 mm, please contact Stresstech sales

\*\*Voltage to be specified

